

Standard PTFE Air-Operated Double Diaphragm Pumps



TT Series

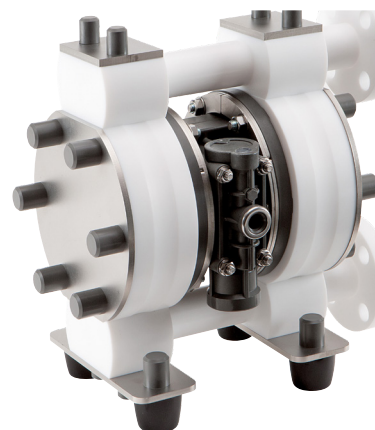


Available in 5 Flow Sizes with a wide range of options and accessories

Specifically designed for transferring highly corrosive chemicals and for use in clean room chemical transfer applications such as the manufacture of microelectronic components, solar panels and semiconductor related applications.

Features include totally non-lubricated technology, fully bolted and torqued pumps with built in design features to resist material creep and reduce the chance of leaks forming over time.

Multiple connection types available to match your application needs.



Standard Grade PTFE Pump Models

Model Code:	TC-X031TT	TC-X051TT	TC-X152TT TC-X152TT-FL	TC-X152TT-SP20 TC-X152TT-SP20-FL	TC-X253TT TC-X253TT-FL
Max Flow Rate:	2.2 GPM (8.5 LPM)	2.96 GPM (11 LPM)	13.2 GPM (50 LPM)	13.2 GPM (50 LPM)	39.6 GPM (150 LPM)
Connection Size:	1/4" (6mm)	1/4" (6mm)	1/2" (15mm)	3/4" (20mm)	1" (25mm)
Check Valves:	Flat Valve	Flat Valve	Flat Valve	Ball Valve	Ball Valve
Max Slurry Solids Size:	0 mm.	0 mm.	2 mm.	2 mm.	3mm.
Air Pressure Range:	30-73 PSI (0.2 ~ 0.5 MPa)				
Wetted Body Materials	PTFE				
Diaphragm / Valve Materials	PTFE				
Certification:	CE				
Specialized Options & Accessories:	Filter Regulator, Flaretek connections, Leak Sensor, High performance muffler, NPT/ ANSI connections, Automatic Spool reset switch, High performance Spring retainers, Stroke counter, PTFE Coated Tie-rods, PTFE coated SUS reinforcement Plate, Pulsation Dampener, H Series High Temperature model for Liquid temperatures up to 150 C, E-Series Electric Solenoid Controlled Pumps with Proximity Sensor. Optional Clean room assembly.				

A supply air pressure of 30 PSI (0.2 MPa) or more is required to operate the pump. If the supply pressure is less than 30 PSI (0.2 MPa), the pump may not operate properly.

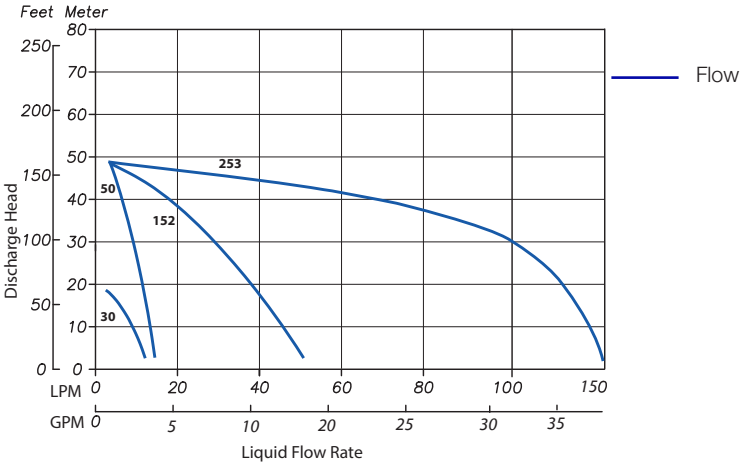
Pump Liquid Temperature Range: 32-180°F(0~82°C)

Ambient Temperature: 32-158°F (0-70°C)

Slurry Recommendation: TC-X031/051: 0"(0mm) TC-X152 (Ball valve): 0.07"(2mm) TC-X253: 0.11"/3mm (253)

PERFORMANCE CURVES

TC-XTT Series



Conditions:
 4" (10 cm) flooded suction.
 Ambient temperature: 79°F (26°C)
 Liquid temperature: 73-77°F (23-25°C)

