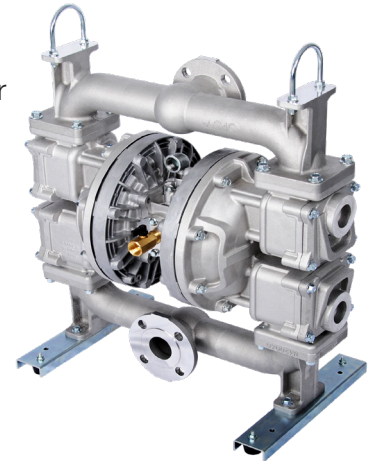


2" TC-X500 Series Metallic Flap Valve Pumps

Highly-Engineered 2" Aluminum Flap Valve Pumps are specifically designed for challenging & demanding fluid transfer applications. Fitted with a heavy-duty, mechanically-actuated shifting mechanism with a non-centering, coil spring assisted air motor. Resists stalling and freezing in almost all operating conditions. Achieves very high flow rates and discharge heads both reliability & efficiently. Designed with top down fluid flow configuration - top Inlet & bottom outlet to help facilitate the transfer of large solids or heavy, slurry-laden liquids efficiently. Heavy duty HNBR rubber encapsulated steel flap valves are capable of handling very large sized solids up to 1.77" (45mm)



Maximum Flow Rate: 158.5 GPM (600 LPM)
 Maximum Discharge Head: 230 FT (70 M)
 Available in: Aluminium
 Spool valve type: Heavy Duty Mechanical
 Certification: CE, ATEX

SPECIFICATIONS	
Material Code*	
Max Flow Rate	158.5 GPM (600 LPM)
Max Air Pressure	100 PSI (0.7 MPa)
Max Air Consumption	211.9 SCFM (6000 L/min)
Max Solid Size	Ø1.18" (Ø30mm) Spherical. Ø0.59" x Ø1.77" (Ø15mm x 45mm) Oblong.
Supply Air Pressure Range ¹	14-100 PSI (0.1 - 0.7 MPa)
Liquid Discharge Volume per cycle	118 oz (3500 ML)
Connection Suction x Discharge	2" ANSI flange 150lb
Weight	161 lbs (73 kg)

* See Chart and Model Number nomenclature on back page for materials

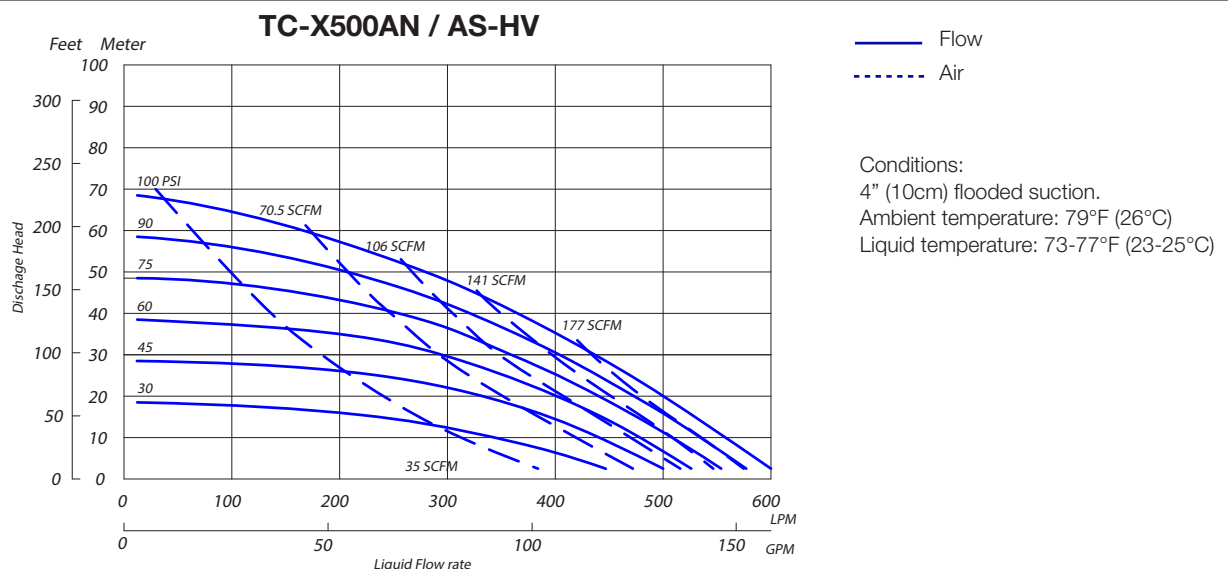
Note 1: A supply air pressure of 14 PSI (0.1 MPa) or more is required to operate the pump. If the supply pressure is less than 14 PSI (0.1 MPa), the pump may not operate properly.

Pump Liquid Temperature Range: 32-158°F(0-70°C)

Ambient Temperature Range: 32-158°F (0-70°C)

Viscosity Limit: Self-Priming 1000 cps (1 Pa·s) or less / Gravity Fed in 8000 cps (8 Pa·s) or less (Please contact your distributor for more details)

PERFORMANCE CURVES



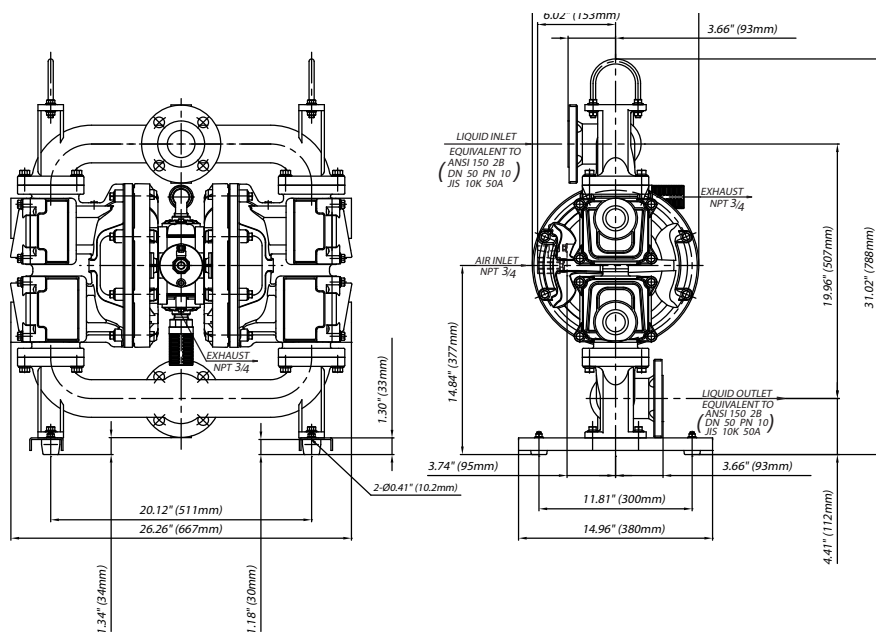
2" TC-X500 Series Metallic Flap Valve Pumps

WET END MATERIALS		
Part Name	AN	AS
Pump wetted parts	AL Alloy / AL	
Diaphragm	BUNA	Santoprene®
Flap Valve / Valve Seat	HNBR	
Outer Diaphragm Plate	AL	
Center Body	AL	

AL Alloy Aluminum Alloy (ADC12)
 AL Aluminum (A5056)
 BUNA Nitrile Rubber (NBR)
 HNBR Hydrogenated Nitrile Butadiene Rubber
 Santoprene® Thermoplastic PolyOlefin (TPO)

DIMENSIONS

TC-X500AN / AS-HV



MODEL NUMBER NOMENCLATURE

