

Exploded View Drawing and Parts List

Model: **TC-X501FT-NPT**

Model Number: **1M00404MN**

Serial Number:

Service Code:

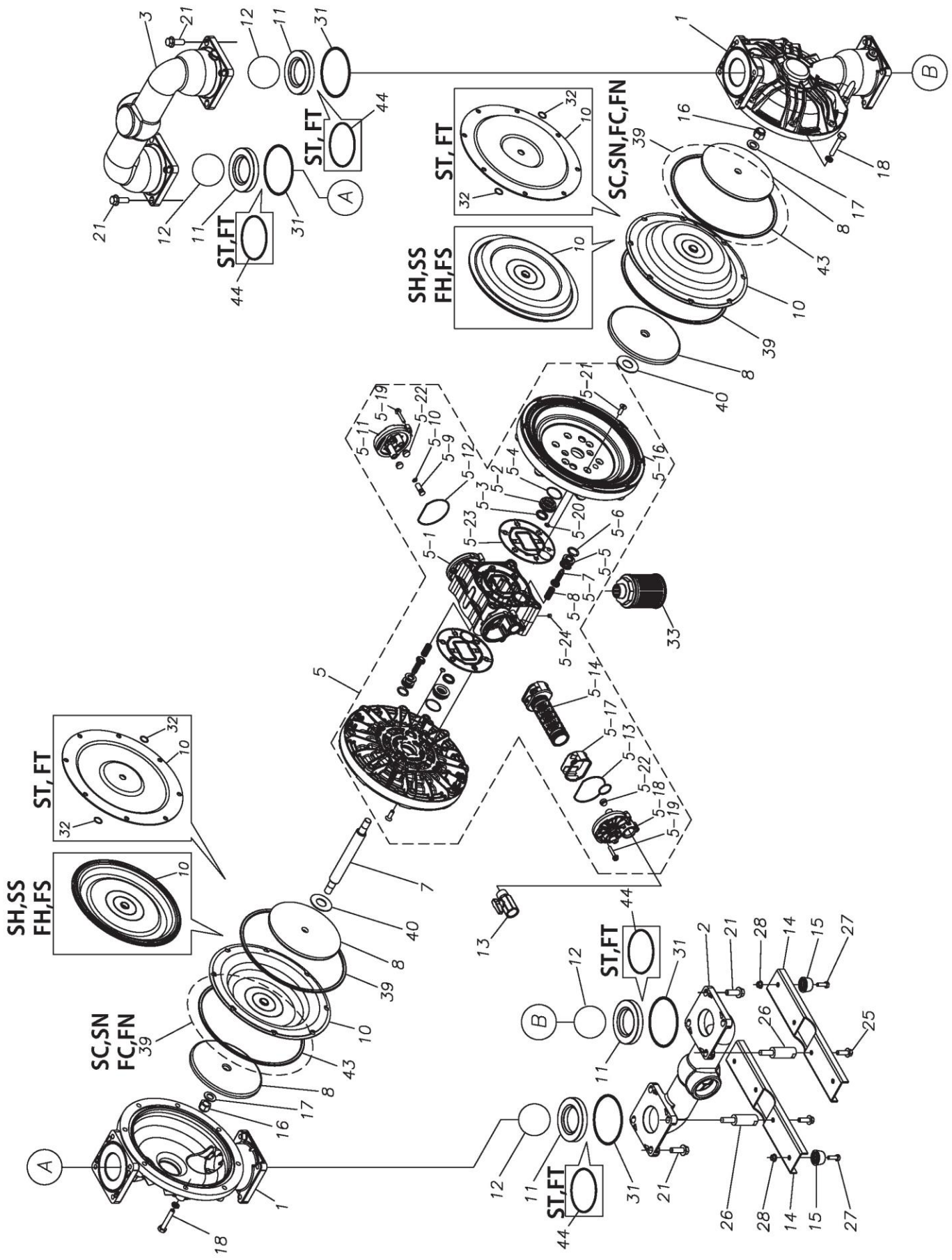
The part list and exploded view drawing as attached below indicate the full list of parts for the above mentioned pump model.

When ordering parts take care to select the correct model pump and required parts. Also be aware that models may change over time as improvements are made so cross-referencing the pumps serial number assembly date and service code are also recommended.

If you require specific spare parts you can also use this form to place your order.

For more information specific to your pump please refer to the pumps Service Book and Operation Manual available separately.

Please contact your Pump Distributor directly for more information.



Ref.No.	Parts No.	Description	Parts Component	Remark	Order Qty
1	1M20001FM	OUT CHAMBER	2		
2	1M20004FN	IN MANIFOLD	1		
3	1M20006FN	OUT MANIFOLD	1		
5	1M10022MN	BODY ASSEMBLY	1		
5-1	1L30054MN	BODY	1		
5-2	1M30026MM	BEARING CENTER ROD	2		
5-3	9S2BA0025	PACKING	2		
5-4	9S1BS0036	O RING S-36	2		
5-5	1L30063MM	PILOT VALVE SEAT	2		
5-6	9S1BP1022	O RING P-22A	2		
5-7	1L30058MB	PILOT VALVE	2		
5-8	1L30064MM	SPRING	2		
5-9	1L30065MM	RESET BUTTON	1		
5-10	9S1BP0008	O RING P-8	1		
5-11	1L30056MB	CAP	1	The parts of #5 are available with a set as [1M10022MN:BODY ASSEMBLY]. This is also available individually.	
5-12	1L30061MB	PACKING CAP	1		
5-13	1L30060MB	PACKING CAP IN	1		
5-14	1L10003MK	C SPOOL VALVE ASSEMBLY (Looped C®)	1		
5-16	1M30061MM	AIR CHAMBER	2		
5-17	1L30005MB	SPRING STOPPER	1		
5-18	1L30055MN	CAP IN	1		
5-19	9B2110635	BOLT M6 × 35	7		
5-20	9T6125008	SCREW M5 × 8	8		
5-21	9B5410825	BOLT M8 × 25	16		
5-22	1L30062MB	CUSHION	4		
5-23	1L30059MB	PACKING BODY	2		
5-24	9P60P9901	PLUG R1/8	2		
7	1L20044TM	CENTER ROD	1		
8	1M20031MM	CENTER DISK	2		
9	1M20033MM	CENTER DISK	2		
10	1M20002T7	DIAPHRAGM	2		
11	1M20013TM	VALVE SEAT	4		
12	1M20032TM	BALL	4		
13	1M90001MN	BALL VALVE	1		
14	1M30032MM	BASE	2		
15	1H30055MB	RUBBER FEET	4		
16	9N1331600	NUT M16 × 1.5	2		
17	9W3311600	CONED DISK SPRING M16	2		
18	9B2111060	BOLT M10 × 60	16		
21	9B2111235	BOLT M12 × 35	12		
25	9B2111030	BOLT M10 × 30	4		
26	1M30037MM	STUD BASE	4		
27	9B1110825	BOLT M8 × 25	4		
28	9N2110800	NUT M8	4		
31	9S1TG0115	O RING G-115	4		
32	9S1TP0016	O RING P-16	4		
33	1L90002MN	SILENCER	1		
39	9S1BG0270	O RING G-270	2		
40	1M30033MB	CUSHION CENTER DISK	2		
43	9S1TG0270	O RING G-270	2		
44	9S1TG0100	O RING G-100	4		

memo