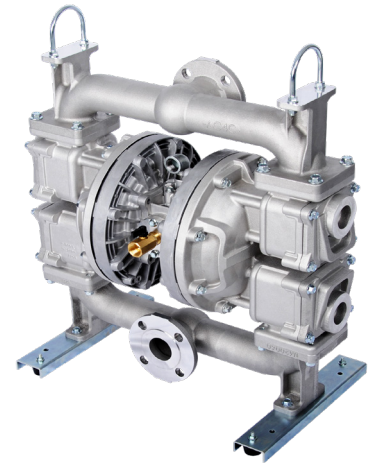


2" TC-X500W-M Series Metallic Flap Valve Pumps

Highly-Engineered 2" Aluminum Flap Valve Pumps are specifically designed for challenging & demanding fluid transfer applications. Fitted with a heavy-duty, mechanically-actuated shifting mechanism with a non-centering, coil spring assisted air motor. Resists stalling and freezing in almost all operating conditions. Achieves very high flow rates and discharge heads both reliability & efficiently. Designed with top down fluid flow configuration - top Inlet & bottom outlet to help facilitate the transfer of large solids or heavy, slurry-laden liquids efficiently. Heavy duty HNBR rubber encapsulated steel flap valves are capable of handling very large sized solids up to 1.77" (45mm).



Maximum Flow Rate: 158.5 GPM (600 LPM)
 Maximum Discharge Head: 230 FT (70 M)
 Available in: Aluminium
 Spool valve type: Heavy Duty Mechanical
 Certification: CE, ATEX

SPECIFICATIONS

Material Code*	
Max Flow Rate	158.5 GPM (600 LPM)
Max Air Pressure	100 PSI (0.7 MPa)
Max Air Consumption	211.9 SCFM (6000 L/min)
Max Solid Size	Ø1.18" (Ø30mm) Spherical. Ø0.59" x Ø1.77" (Ø15mm x 45mm) Oblong
Supply Air Pressure Range ¹	14-100 PSI (0.1 - 0.7 MPa)
Liquid Discharge Volume per cycle	118 oz (3500 ML)
Connection Suction x Discharge	Combination Flange 2"ANSI 150lb - JIS10K 80A w/internal 2" NPT (F)
Weight	161 lbs (73 kg)

* See Chart and Model Number nomenclature on back page for materials

Note 1: A supply air pressure of 14 PSI (0.1 MPa) or more is required to operate the pump. If the supply pressure is less than 14 PSI (0.1 MPa), the pump may not operate properly.

Pump Liquid Temperature Range: NBR Diaphragm - 32-180°F (0-82°C) TPO Diaphragm - 32-212°F (0-100°C)

Ambient Temperature Range: 32-158°F (0-70°C)

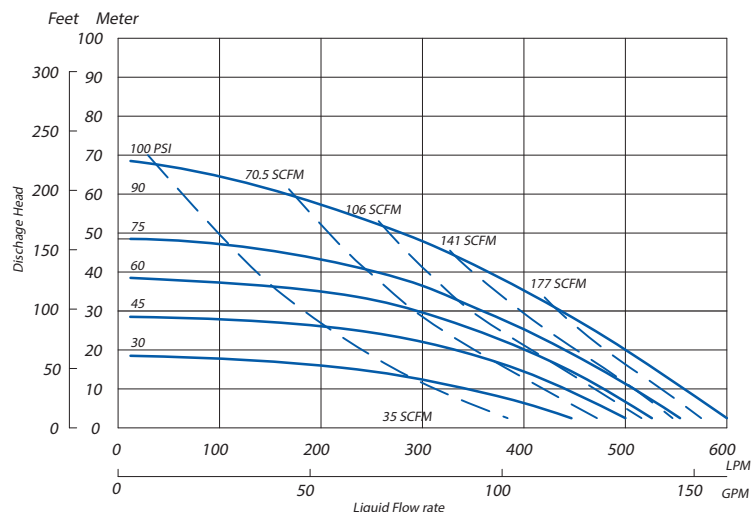
Viscosity Limit: Self-Priming 1000 cps (1 Pa-s) or less / Gravity Fed in 8000 cps (8 Pa-s) or less (Please contact your distributor for more details)

PERFORMANCE CURVES

TC-X500W-M

— Flow
 - - - Air

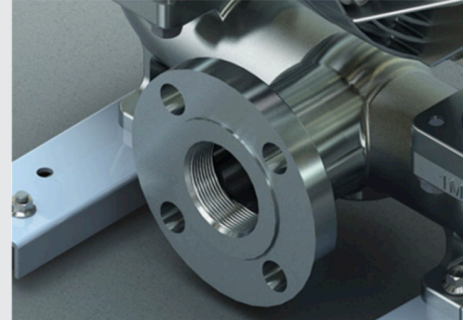
Conditions:
 4" (10cm) flooded suction.
 Ambient temperature: 79°F (26°C)
 Liquid temperature: 73-77°F (23-25°C)



2" TC-X500W-M Series

THREADED FLANGE MANIFOLD

The TC-X500-M model features a standard threaded flange manifold, offering both flange and threaded connection options.



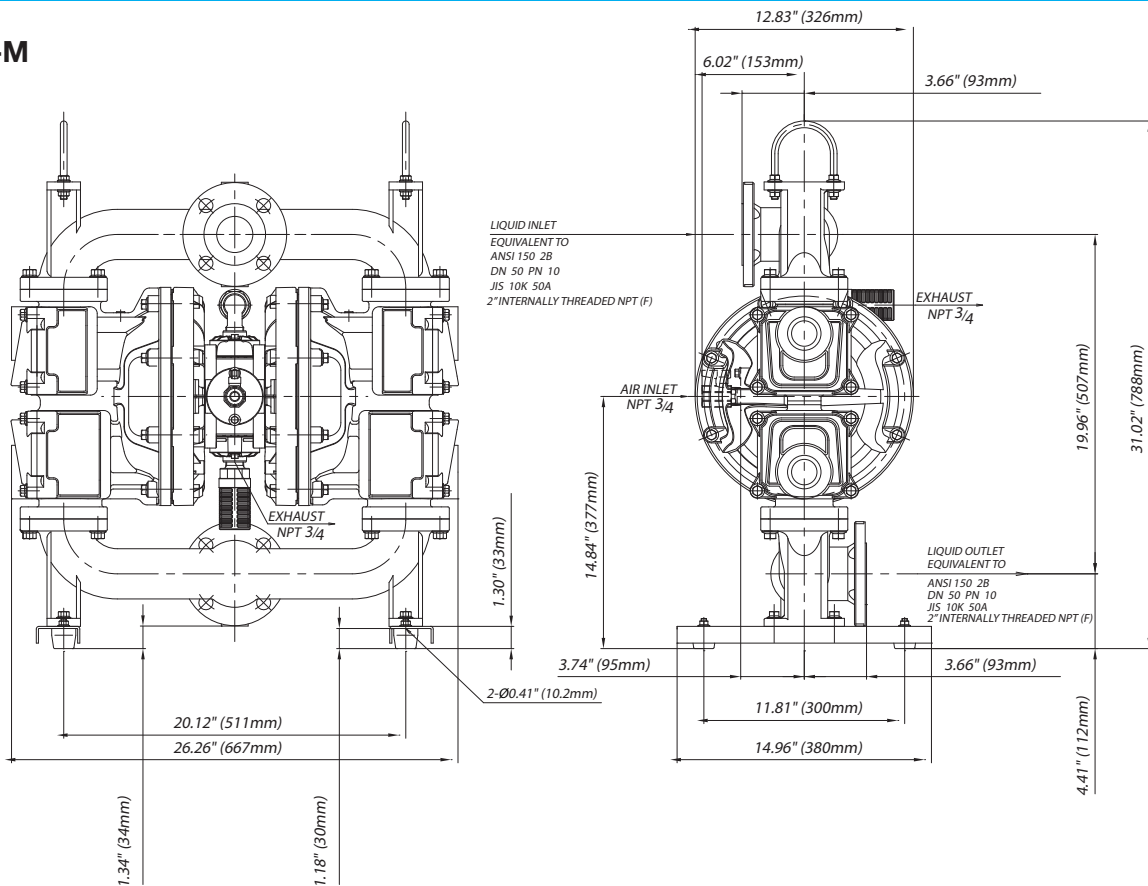
WET END MATERIALS

Part Name	AN	AS
Pump Wetted Parts	AL Alloy / AL	
Diaphragm	BUNA	Santoprene®
Flap Valve / Valve Seat	HNBR	
Outer Diaphragm Plate	AL	
Center Body	AL	

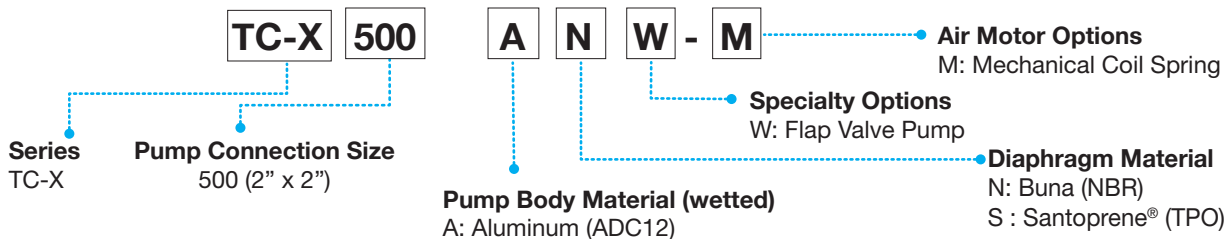
AL Alloy Aluminum Alloy (ADC12)
 AL Aluminum (A5056)
 BUNA Nitrile Rubber (NBR)
 HNBR Hydrogenated Nitrile Butadiene Rubber
 Santoprene® Thermoplastic PolyOlefin (TPO)

DIMENSIONS

TC-X500W-M



MODEL NUMBER NOMENCLATURE



Five Boynton Road, Holliston, MA 01746 USA
 Tel: 508-429-1440 / service@iwaki-america.com / www.iwaki-air.com