

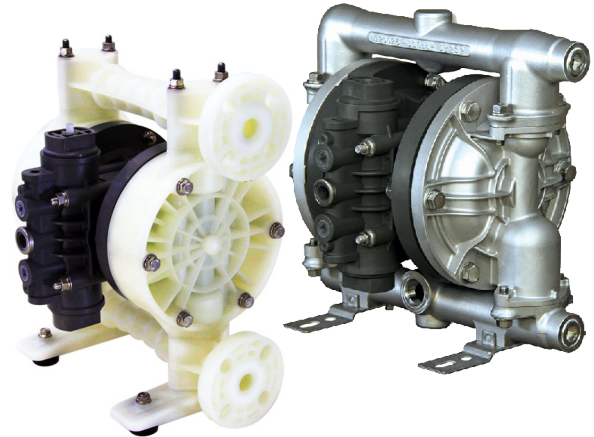
Air-Operated Double Diaphragm Pumps



3/4" TC-X200 Series

The TC-X200 Series pumps offer excellent flow rates and an upgraded heavy duty body design. The pumps can operate with variable air pressures and are suited for both start/stop and fully continuous duty pumping applications. Featuring the new Looped C® Air Motor technology. Both Flange and Threaded connections available.

Maximum Flow Rate: 55.5 GPM (210 L/Min)
 Maximum Discharge Head: 230 ft (70 m)
 Available in: GFRPP, PVDF (Kynar®), Aluminum, Stainless Steel
 Spool valve type: Looped C® Spring Valve
 Check Valves: Ball type
 Certification: CE



SPECIFICATIONS				
Material Code*	G "X"	V "X"	GT/GW	VT/VW
Max Flow Rate	34.3 GPM (130 LPM)		29.1 GPM (110 LPM)	
Max Air Pressure	100 PSI (0.7 MPa)			
Max Air Consumption	45.9 scfm (1300 L/min)		42.3 scfm (1200 L/min)	
Supply Air Pressure Range ¹	30-100 PSI (0.2 - 0.7 MPa)			
Liquid Discharge Volume per cycle	12 oz (350 mL)		8 oz (240 mL)	
Suction x Discharge	NPT 3/4" / 3/4" ANSI flange 150 lb / JIS Flange 10k40A			
Weight	15.4 lbs (7.0kg)	19.8 lbs (9.0kg)	15.4 lbs (7.0kg)	19.8 lbs (9.0kg)

* See Chart and Model Number nomenclature on back page for materials
 Note 1: A supply air pressure of 30 PSI (0.2 MPa) or more is required to operate the pump.
 Pump Liquid Temperature Range: Standard PPG Air motor 0-82°C. Aluminum air motor (except G"x" models): CR/NBR Diaphragm 32-180°F (0-82°C), FKM/TPEE Diaphragm 32-248°F (0-120°C)
 EPDM/TPO/PTFE 32-212°F (0-100°C)
 Slurry Recommendation: 0.08" (2 mm) or less
 Viscosity Limit: Suction lift ~3000 cps (3 Pa-s) Force in ~8000 cps (8 Pa-s) (Please contact your distributor for more details)
 Suction Lift: Plastic Models - PTFE Dry: 5' (1.5 meters); Rubber Dry: 10' (3 meters); Wet (Primed): 26.2' (8 meters)

SPECIFICATIONS				
Material Code*	A "X"	S "X"	AT/AW	ST/SW
Max Flow Rate	55.5 GPM (210 LPM)		50.2 GPM (190 LPM)	
Max Air Pressure	100 PSI (0.7 MPa)			
Max Air Consumption	56.5 scfm (1600 L/min)			
Supply Air Pressure Range ¹	30-100 PSI (0.2 - 0.7 MPa)			
Liquid Discharge Volume per cycle	27 oz (800 mL)		22 oz (650 mL)	
Suction x Discharge	NPT 3/4"			
Weight	23.1 lbs (10.5kg)	44.1 lbs (20.0 kg)	23.1 lbs (10.5kg)	44.1 lbs (20.0 kg)
Weight (MT)	25.4 lbs (11.5 kg)	46.3 lbs (21.0 kg)	25.4 lbs (11.5 kg)	46.3 lbs (21.0 kg)

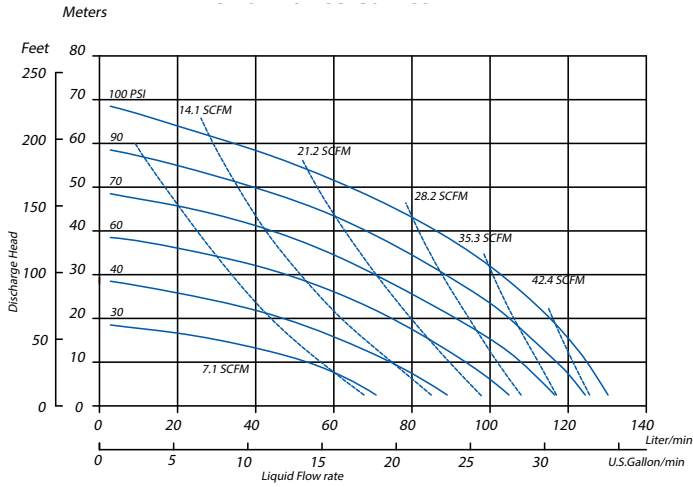
* See Chart and Model Number nomenclature on back page for materials
 Note 1: A supply air pressure of 30 PSI (0.2 MPa) or more is required to operate the pump.
 Pump Liquid Temperature Range: Standard PPG Air motor 0-82°C. Aluminum air motor: CR/NBR Diaphragm 32-180°F (0-82°C), FKM/TPEE Diaphragm 32-248°F (0-120°C) EPDM/TPO/PTFE 32-212°F (0-100°C)
 Slurry Recommendation: 0.25" (6.5 mm) or less
 Viscosity Limit: Suction lift ~3000 cps (3 Pa-s) Force in ~8000 cps (8 Pa-s) (For applications requiring higher viscosity, please consult your distributor)
 Suction Lift: Metallic Models - PTFE Dry: 5' (1.5 meters); Rubber Dry: 14.7' (4.5 meters); Wet (Primed): 26.2' (8 meters)

PERFORMANCE CURVES

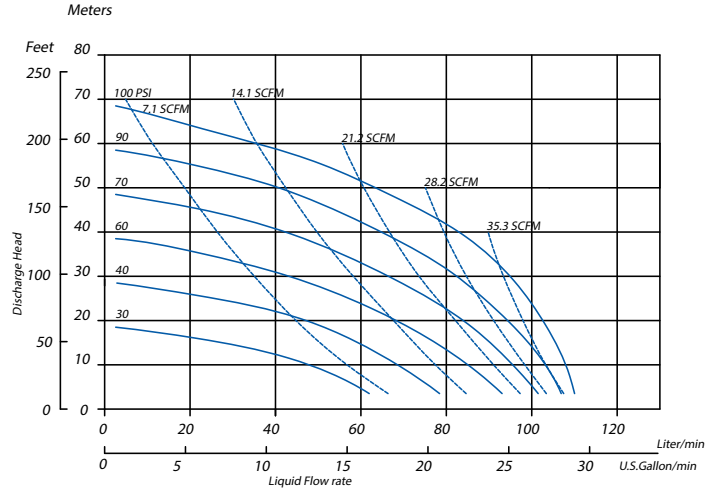
— Flow
 - - - - Air

Conditions:
 4" (10 cm) flooded suction.
 Ambient temperature: 68-77°F (20-25°C)
 Liquid temperature: 68-77°F (20-25°C)

TC-X200G"X"/V"X" (except T & W)



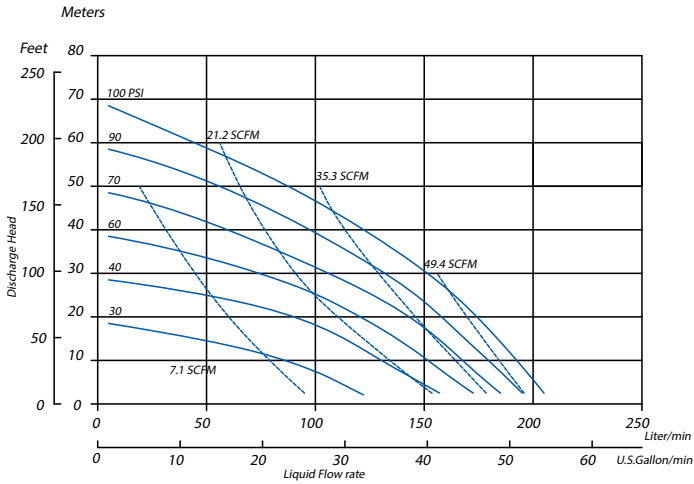
TC-X200GT/GW/VT/VW



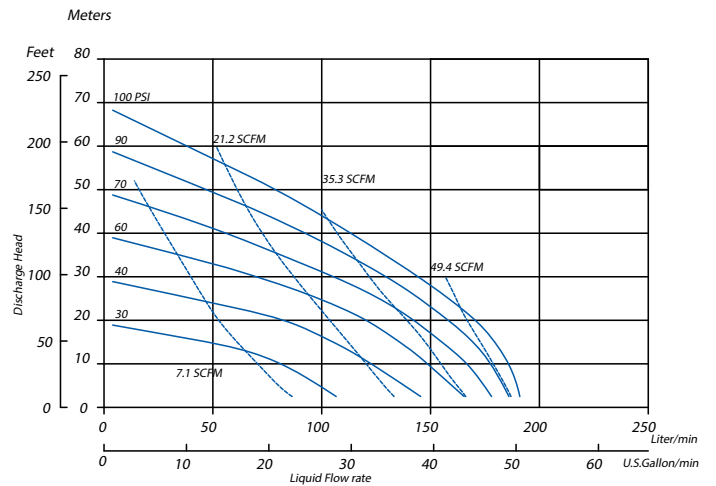
— Flow
 - - - - Air

Conditions:
 4" (10 cm) flooded suction.
 Ambient temperature: 68-77°F (20-25°C)
 Liquid temperature: 68-77°F (20-25°C)

TC-X203A"X"/S"X" (except T & W)

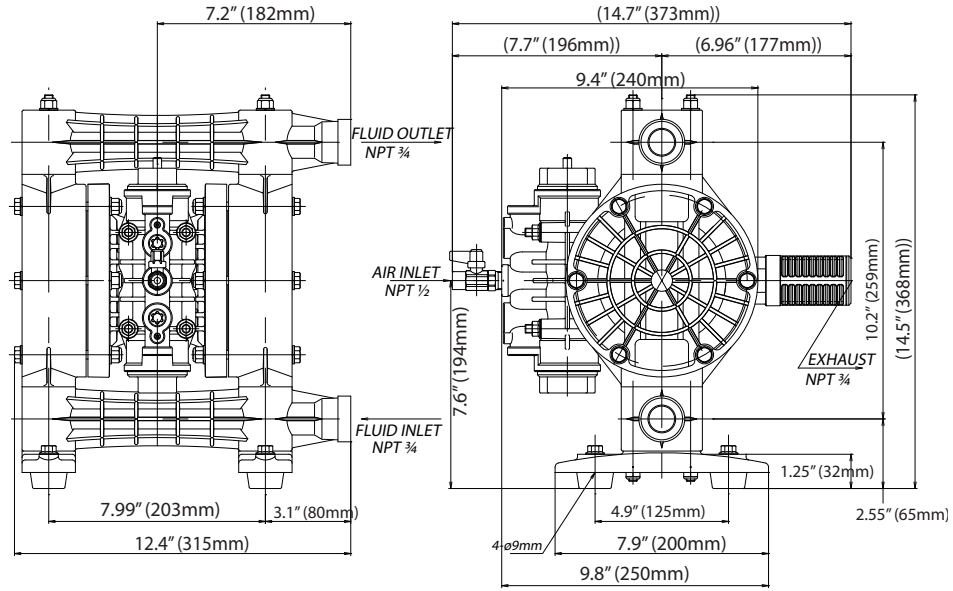


TC-X203AT/AW/ST/SW

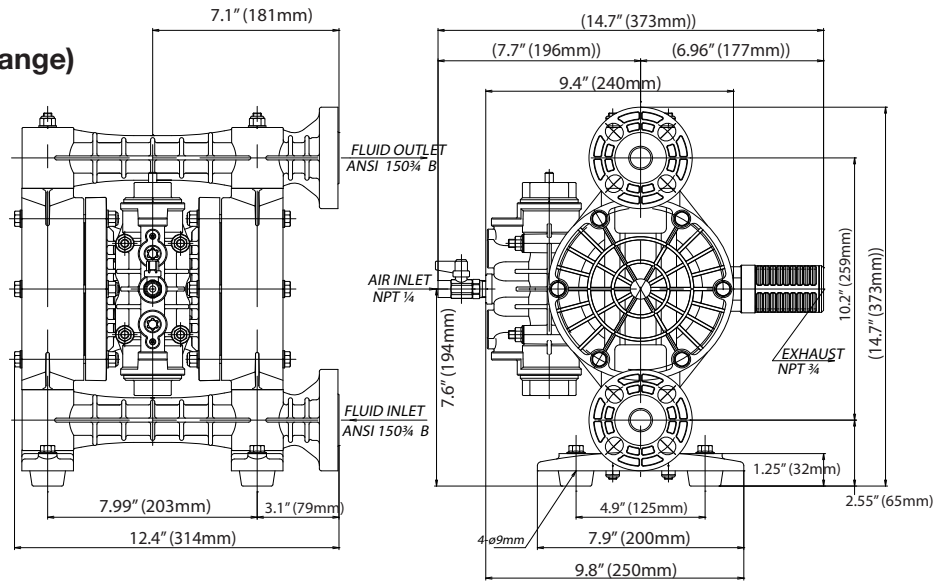


DIMENSIONS

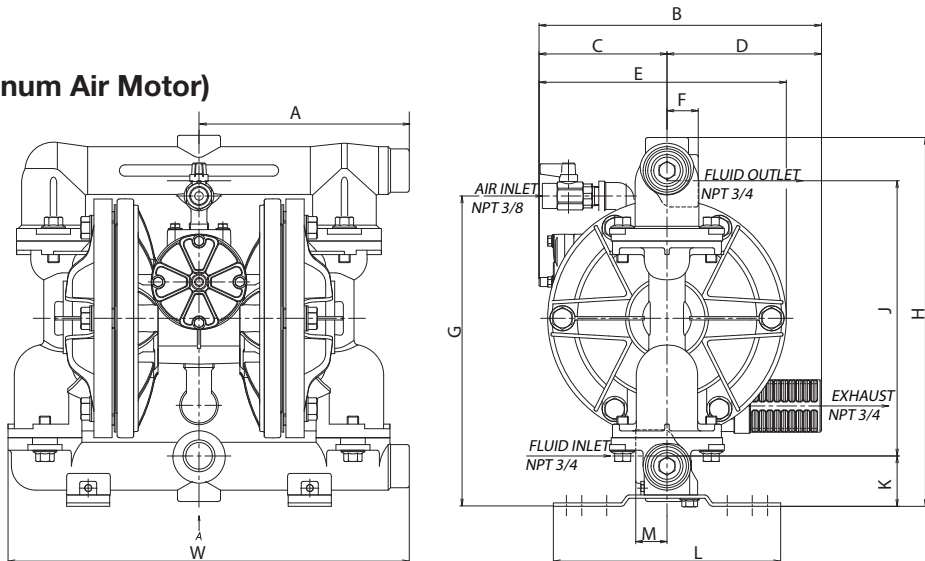
TC-X200G/V (NPT)



TC-X200G/V (ANSI Flange)



TC-X203A/S (Aluminum Air Motor)



MODEL	A	B	C	D	E	F	G	H	J	K	L	M	W
203S (-MT)	7.3	9.8	4.4	5.4	8.6	1.1	10.7	12.8	9.5 (242)	1.7	7.9	1.1	13.9
203A (-MT)	(185)	(249)	(113)	(136)	(218)	(28)	(273)	(324)	9.6 (244)	(44)	(200)	(28)	(353)

WET END MATERIALS

Code	Pump Wetted Parts	Diaphragm	Ball Valve / Valve Seat	Valve Stopper	Outer Diaphragm Plate	Center Body
GC	GFRPP	Neoprene™	Neoprene™/BUNA	AL	GFRPP (SCS13*)	GFRPP
GN		BUNA	BUNA			
GE		EPDM	EPDM			
GV		Viton®	Viton®			
GT		PTFE	PTFE			
GW		PTFE/ EPDM backup (one piece)	PTFE			
GH		Hytrel™	Hytrel™ /BUNA			
GS		Santoprene®	Santoprene®/EPDM			
VE	PVDF	EPDM	EPDM	PVDF	PVDF (SCS13*)	GFRPP
VV		Viton®	Viton®			
VT		PTFE	PTFE			
VW		PTFE/ EPDM backup (one piece)	PTFE			
VH		Hytrel™	Hytrel™ /BUNA			
VS		Santoprene®	Santoprene®/EPDM			
AC	AL	Neoprene™	Neoprene™/BUNA	AL	AL	PPG
AN		BUNA	BUNA			
AE		EPDM	EPDM			
AV		Viton®	Viton®			
AT		PTFE	PTFE			
AW		PTFE/ EPDM backup (one piece)	PTFE			
AH		Hytrel™	Hytrel™/BUNA			
AS		Santoprene®	Santoprene®/EPDM			
SC	Cast SS	Neoprene™	Neoprene™/BUNA	SS 316	SS 316	AL
SN		BUNA	BUNA			
SE		EPDM	EPDM			
SV		Viton®	Viton®			
ST		PTFE	PTFE			
SW		PTFE/ EPDM backup (one piece)	PTFE			
SH		Hytrel™	Hytrel™/BUNA			
SS		Santoprene®	Santoprene®/EPDM			

Neoprene™ Chloroprene Rubber (CR)
 BUNA Nitrile Rubber (NBR)
 EPDM Ethylene propylene diene monomer (Nordel™)
 Viton® Fluoroelastomer (FKM)
 PTFE Polytetrafluoroethylene (Teflon®)
 Hytrel™ Thermoplastic Polyester Elastomer (TPEE)
 Santoprene® Thermoplastic PolyOlefin (TPO)
 GFRPP Glass Fiber Reinforced Polypropylene
 PVDF Polyvinylidene Fluoride (Kynar®)
 AL Aluminum
 SCS13 Cast Stainless Steel Grade*
 SS316 Stainless Steel
 * SCS13 and SCS16 Insert material

MODEL NUMBER NOMENCLATURE

